

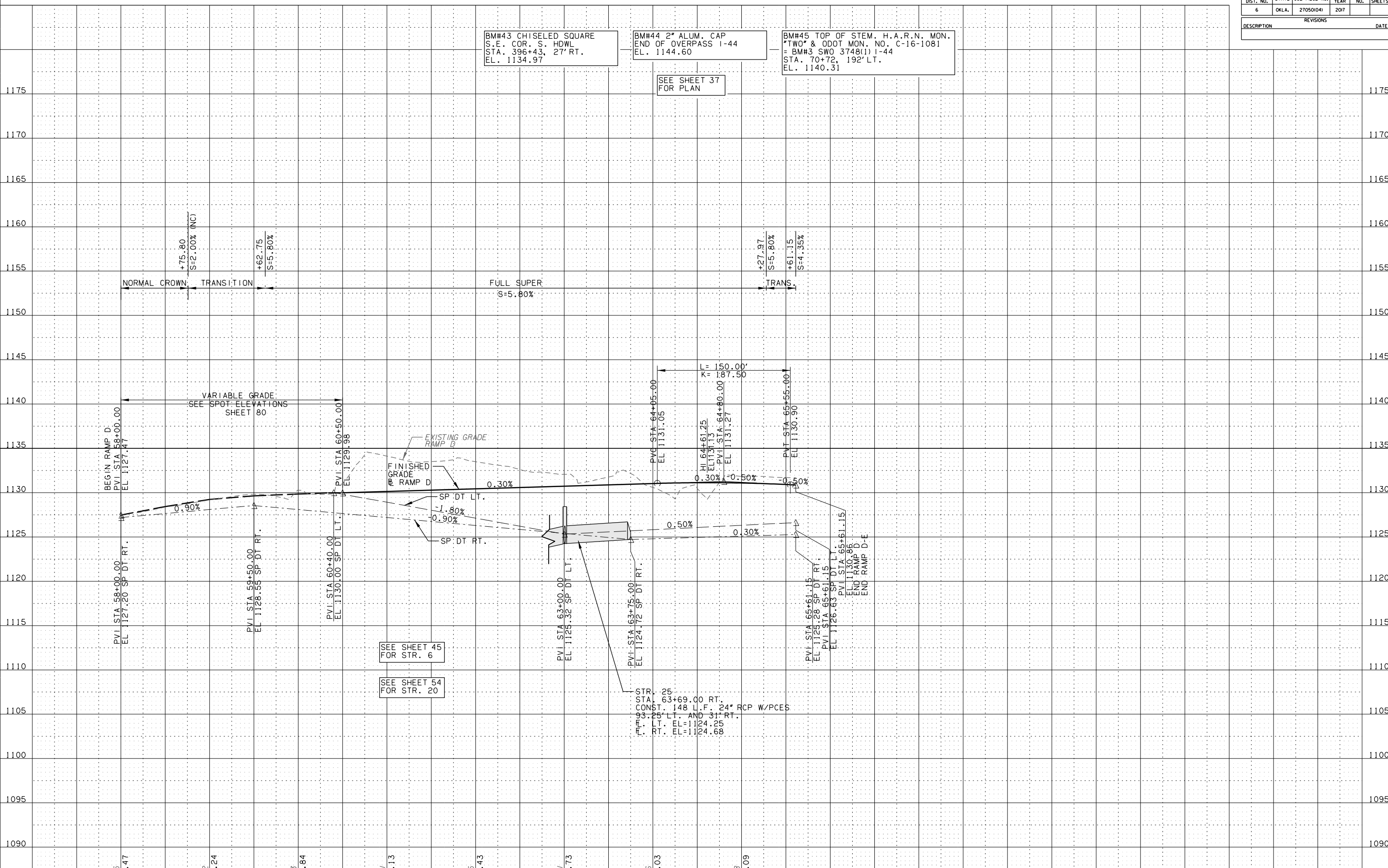
BM#43 CHISELED SQUARE
S.E. COR. S. HDWL
STA. 396+43, 27' RT.
EL. 1134.97

BM#44 2" ALUM. CAP
END OF OVERPASS 1-44
EL. 1144.60

BM#45 TOP OF STEM. H.A.R.N. MON.
"TWO" & ODOT MON. NO. C-16-1081
= BM#3 SWO 3748(1) 1-44
STA. 70+72, 192' LT.
EL. 1140.31

SEE SHEET 37
FOR PLAN

SCALE:
HORIZ.: 1"=50'
VERT.: 1"=5'



SEE SHEET 45
FOR STR. 6

SEE SHEET 54
FOR STR. 20

STR. 25
STA. 63+69.00 RT.
CONST. 148 L.F. 24" RCP W/PCES
95.25' LT. AND 31' RT.
FIN. RT. EL=1124.25
RT. EL=1124.68